



2,593 - 2,965 Sq. Ft.

1.5 Stories

4 Bed

3.0 Bath

Primary Bed: Down

## About Carthage

- Great room showcases fireplace, optional built-in shelving and access to covered porch or patio.
- Kitchen with bar seating, corner pantry and gourmet kitchen option.
- Primary suite on first floor features two separate closets, garden tub and separate shower or shower-only option, dual sinks and private water closet.
- Two bedrooms on first floor share hall access to full bathroom.
- Mud room/laundry room with garage access and built-in bench with coat hooks and cubbies.
- Second floor with additional bedroom and bathroom.

...Read More Online



Elevation C



Elevation D



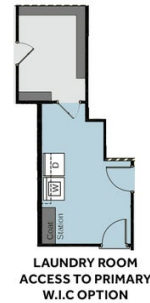
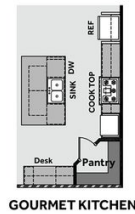
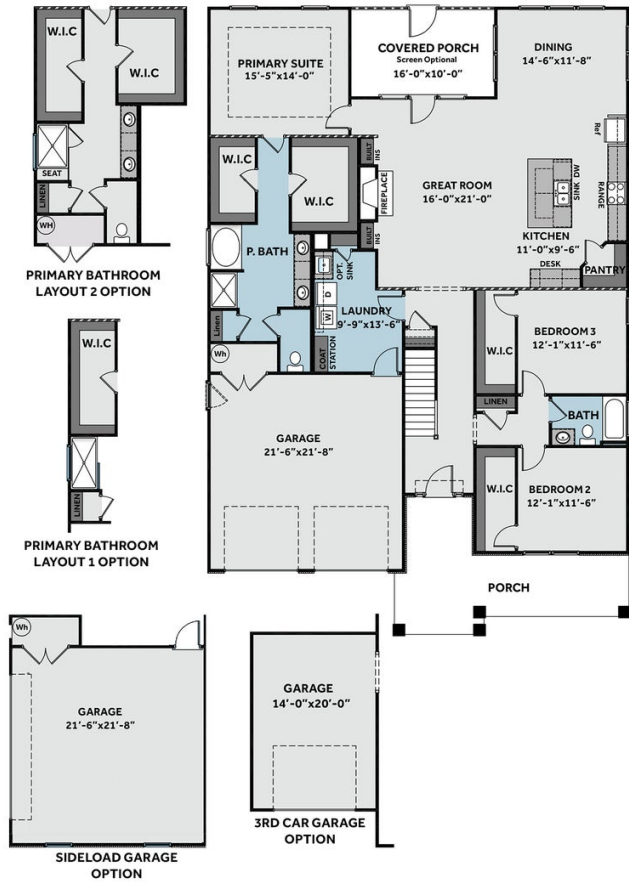
Elevation Coastal

Prices, plans, dimensions, features, specifications, materials, and availability of homes or communities are subject to change without notice or obligation. Illustrations are artists depictions only and may differ from completed improvements. All prices subject to change without notice. Please contact your sales associate before writing an offer.

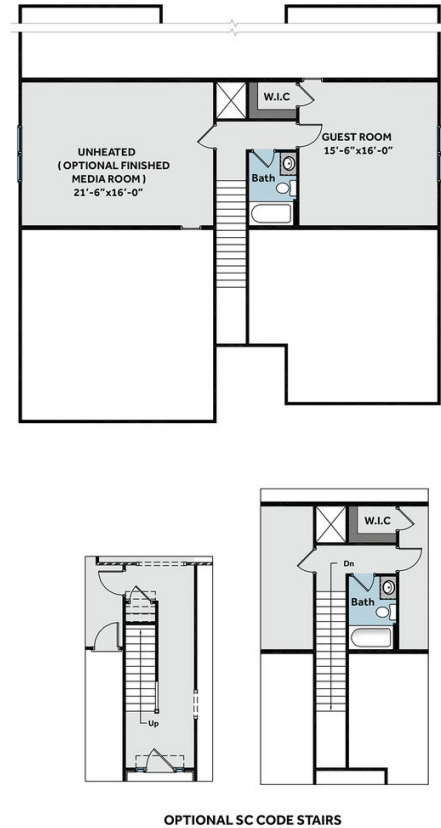
ARCHIVED 11/9/2023

**THE CARTHAGE**  
CC2593

**FIRST FLOOR**



**SECOND FLOOR**



Prices, plans, dimensions, features, specifications, materials, and availability of homes or communities are subject to change without notice or obligation. Illustrations are artists depictions only and may differ from completed improvements. All prices subject to change without notice. Please contact your sales associate before writing an offer.

