



2729 Longleaf Pine Circle  
Leland, NC 28451

**GRAYSON PARK - GRANVILLE**

CONTACT OUR NEW HOME SPECIALISTS

**MAGGIE & JESSICA**

Call Us @ 910-405-8311

info@cavinessandcates.com



**Priced**

**\$479,000**

Similar Home

2,724 Sq Ft

2.0 Story

4 Beds

2.5 Baths

2 Car Garage

Primary Bedroom: Down

## About 2729 Longleaf Pine Circle

\*\$5,000 Builder Incentive - to be used towards rate buydown, closing costs, or design studio upgrades! Conditions apply. Please see builder representative for details.

- Great room with gas log fireplace with floating mantle stained in "Loft Pine".
- Formal dining room painted in Sherwin Williams "Cityscape" with two-piece crown molding and picture frame wainscoting detail.



...Read More Online

## About The Community.

Grayson Park is a beautiful community in Leland, North Carolina within Brunswick County. Only 12 minutes to downtown Wilmington and surrounded by all the city and coast have to offer! Grayson Park offers an attractive natural setting with abundant wooded areas and ponds. Amenities include a clubhouse with a catering kitchen; a competition-size swimming pool and kiddie pool; lighted tennis courts; playground; sidewalks; and walking trails! Visit Grayson Park today and find a place to call home!

...Read More Online

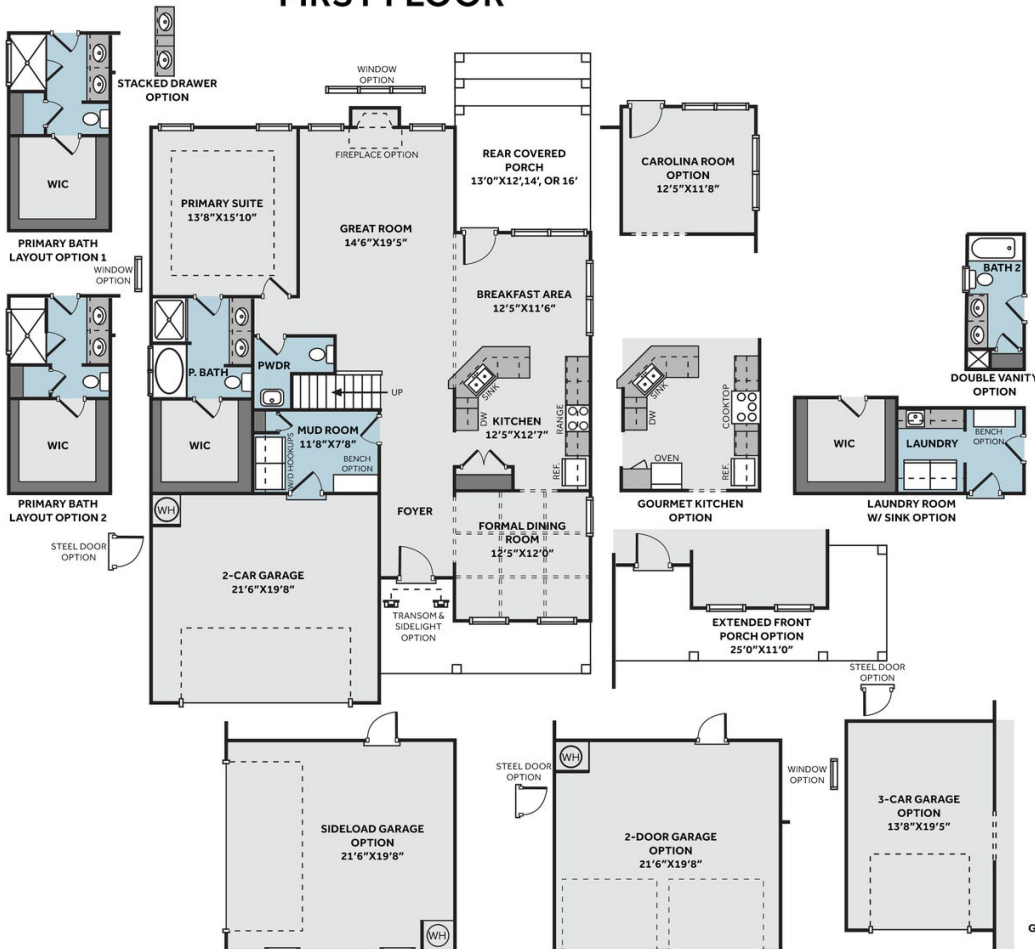
Prices, plans, dimensions, features, specifications, materials, and availability of homes or communities are subject to change without notice or obligation. Illustrations are artists depictions only and may differ from completed improvements. All prices subject to change without notice. Please contact your sales associate before writing an offer.



## THE GRANVILLE

CC2680

### FIRST FLOOR



### SECOND FLOOR

