



245 Clear View School Road
 Jacksonville, NC 28540
HAYDEN PLACE - SPRINGFIELD

CONTACT OUR NEW HOME SPECIALISTS
MAGGIE & JESSICA
 Call Us @ 910-405-8311
 info@cavinessandcates.com



Priced
\$377,900

- 1,884 Sq Ft
- 2.0 Story
- 4 Beds
- 2.5 Baths
- 3 Car Garage
- Primary Bedroom: Up

About 245 Clear View School Road

***\$5,000 builder incentive available on select inventory homes with contracts submitted on or before 12/31/24 with 30-day closing. Please see builder representative for details.**

- The Springfield floorplan boasts a spacious great room that seamlessly connects to the kitchen and dining area, creating a welcoming and open living space.
- A rear-covered porch, easily accessible through the great room, offers the perfect outdoor retreat.



...Read More Online

About The Community.

Built with families in mind, Hayden Place offers nature views and is walkable to the local elementary school and located just 11.5 miles to Camp Lejeune, 8.4 MILES to MCAS New River's Main Gate and 12 minutes to downtown Jacksonville. Your new *Place to Call Home* is built with the quality of construction you've come to expect from a Caviness & Cates home; including our in-house 1-2-10 year home warranty, thoughtfully designed home plans, and stunning included design features.

Residents will find all they need to entertain their whole family at Hayden Place. From proposed

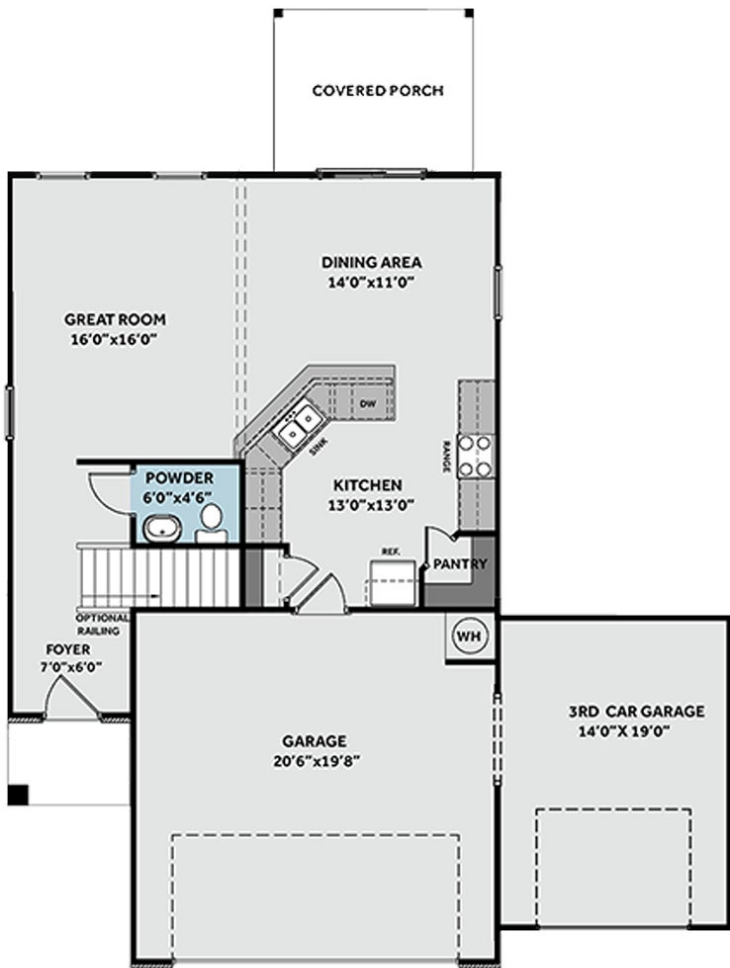


...Read More Online

Prices, plans, dimensions, features, specifications, materials, and availability of homes or communities are subject to change without notice or obligation. Illustrations are artists depictions only and may differ from completed improvements. All prices subject to change without notice. Please contact your sales associate before writing an offer.



FIRST FLOOR



SECOND FLOOR

