



230 Clear View School Road
Jacksonville, NC 28540

HAYDEN PLACE - CAMBRIDGE

CONTACT OUR NEW HOME SPECIALISTS

MAGGIE & JESSICA

Call Us @ 910-405-8311

info@cavinessandcates.com



Priced

\$409,900

2,432 Sq Ft

1.5 Story

4 Beds

3.0 Baths

2 Car Garage

Primary Bedroom: Down

About 230 Clear View School Road

*\$5,000 Builder Incentive - to be used towards rate buydown, closing costs, or design studio upgrades! Conditions apply. Please see builder representative for details.

- Great room with electric fireplace with decorative mantle and granite surround in "Absolute Back".
- Open kitchen with island with sink overlooking the great room, quartz countertops in "Carrera Cloud", subway tile backsplash in "Arctic White" set in a herringbone pattern, white shaker

...Read More Online

About The Community.

Built with families in mind, Hayden Place offers nature views and is walkable to the local elementary school and located just 11.5 miles to Camp Lejeune, 8.4 MILES to MCAS New River's Main Gate and 12 minutes to downtown Jacksonville. Your new *Place to Call Home* is built with the quality of construction you've come to expect from a Caviness & Cates home; including our in-house 1-2-10 year home warranty, thoughtfully designed home plans, and stunning included design features.

Residents will find all they need to entertain their whole family at Hayden Place. From proposed playgrounds, a dog park, and tot lot, every family member, even the four-legged ones will have a space to get outdoors and enjoy the wonderful Eastern North Carolina climate. Our onsite elementary school,

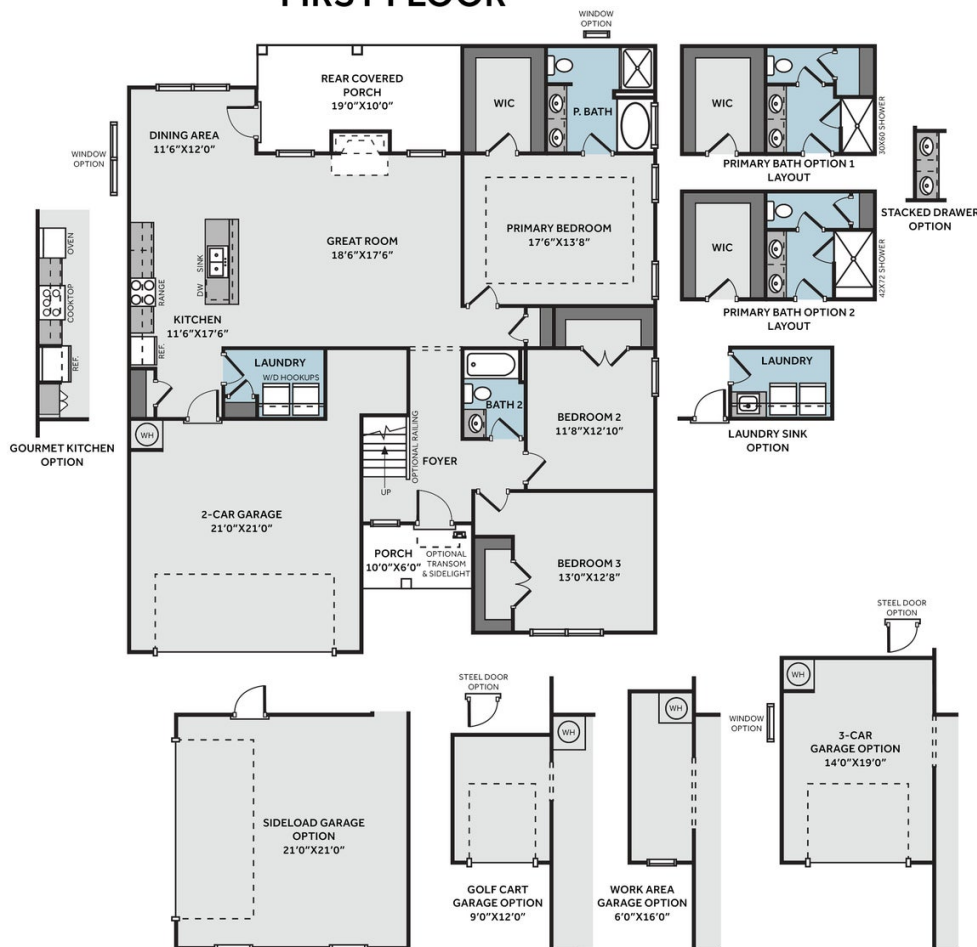
...Read More Online

Prices, plans, dimensions, features, specifications, materials, and availability of homes or communities are subject to change without notice or obligation. Illustrations are artists depictions only and may differ from completed improvements. All prices subject to change without notice. Please contact your sales associate before writing an offer.



THE CAMBRIDGE CC1850

FIRST FLOOR



SECOND FLOOR

