



6717 Carriage Crossing Road
Hope Mills, NC 28348

THE MEADOWS AT ROSLIN FARMS WEST -
DRAYTON

CONTACT OUR NEW HOME SPECIALISTS

MAGGIE & JESSICA

Call Us @ 910-405-8311

info@cavinessandcates.com



Priced

\$389,900

Similar Home

2,325 Sq Ft

2.0 Story

4 Beds

2.5 Baths

3 Car Garage

Primary Bedroom: Up

About 6717 Carriage Crossing Road

***\$5,000 Builder Incentive - to be used towards rate buydown, closing costs, or design studio upgrades! Conditions apply. Please see builder representative for details.**

- First floor with formal dining room painted in Sherwin Williams "Cityscape" with picture frame wainscoting detail and two-piece crown molding.
- Kitchen with island is open to breakfast area and great room, quartz countertops in "New Willow White", subway tile backsplash in "Arctic White" set in a brick pattern, white shaker cabinets, and

...Read More Online

About The Community.

Discover the tranquil serenity homeowners experience when living in the Roslin Farms community. With room to roam and expansive places to play, homeowners benefit from quiet living with the convenience of the city just outside the community's entrance.

A family-friendly neighborhood located near all the city of Fayetteville has to offer. Take advantage of healthcare facilities and area golf courses, state parks, and more. Just minutes from shopping centers, local restaurants, and various attractions, Roslin Farms is the perfect place to call home. Close to I-95 and the Fayetteville Regional Airport. Offering charming, energy-efficient new homes on spacious +/- half-acre homesites!

...Read More Online

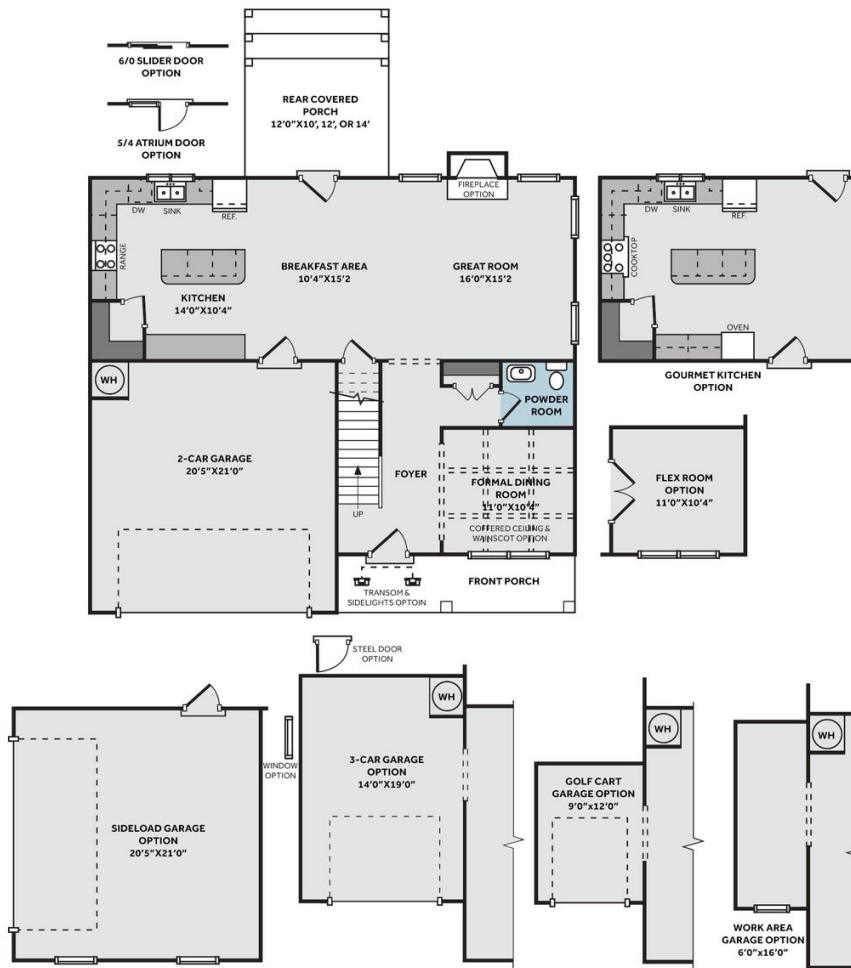
Prices, plans, dimensions, features, specifications, materials, and availability of homes or communities are subject to change without notice or obligation. Illustrations are artists depictions only and may differ from completed improvements. All prices subject to change without notice. Please contact your sales associate before writing an offer.



THE DRAYTON

CC2325

FIRST FLOOR



SECOND FLOOR

