



974 Appaloosa Trail
Grimesland, NC 27837
BEDDARD RANCH - CAMELLIA

CONTACT OUR NEW HOME SPECIALISTS
MAGGIE & JESSICA
Call Us @ 910-405-8311
info@cavinessandcates.com



Priced

\$449,900

Elevation F
2,358 Sq Ft
2.0 Story
3 Beds
2.5 Baths
3 Car Garage
Primary Bedroom: Down

About 974 Appaloosa Trail

- Upon entering the home, a formal dining room painted in Sherwin Williams "Rare Gray" with two-piece crown molding and picture frame wainscoting detail, is located off the foyer with direct access to the kitchen.
- The mudroom, located just off the entry, features a built-in bench with cubbies and provides access to both the garage and a half-bath.
- The kitchen offers ample countertop space with granite countertops in "Trigato," a sink overlooking the great room, bar seating, white shaker cabinets, subway tile backsplash in "Arctic White" set in a

...Read More Online

About The Community.

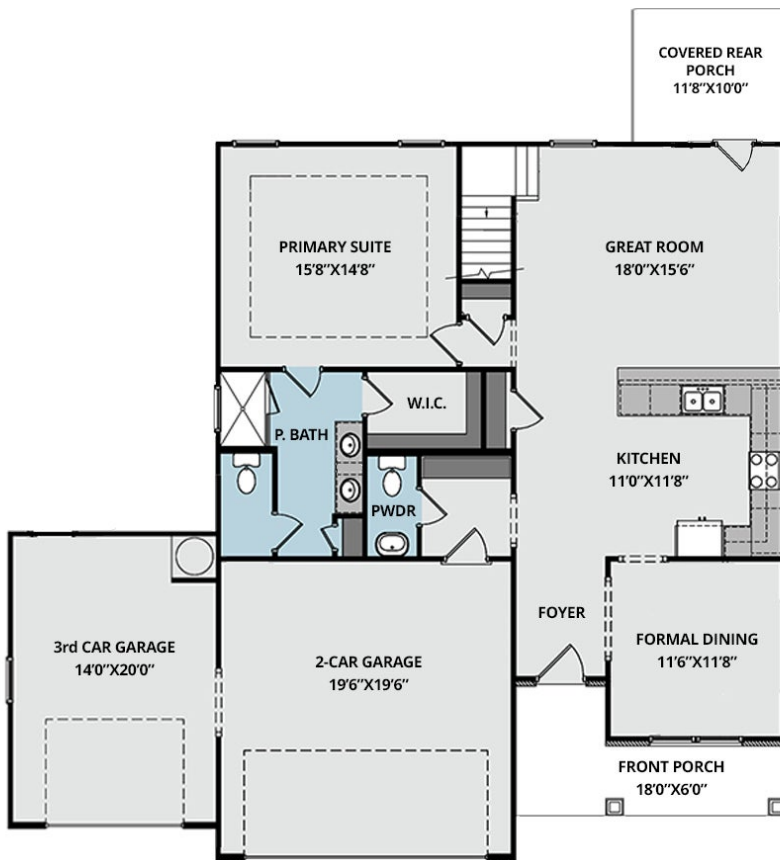
Beddard Ranch is a cozy, 41-home community in Grimesland, NC. Enjoy spacious homesites averaging half an acre and more! Your new home in Beddard Ranch feels tucked away but is just 15 minutes from the shopping, dining, and entertainment of Uptown Greenville. All homes feature the Caviness & Cates in-house 1-2-10 year warranty. Choose from one of our pre-designed homes under construction, or start from the ground up by choosing your favorite homesite, plan, and design options from the beginning! See each home listing for builder incentives and contact our New Home Specialists for details!

...Read More Online

Prices, plans, dimensions, features, specifications, materials, and availability of homes or communities are subject to change without notice or obligation. Illustrations are artists depictions only and may differ from completed improvements. All prices subject to change without notice. Please contact your sales associate before writing an offer.



FIRST FLOOR



SECOND FLOOR

