



2829 Palamino Way  
Grimesland, NC 27837

**BEDDARD RANCH - CLAYTON**

CONTACT OUR NEW HOME SPECIALISTS

**MAGGIE & JESSICA**

Call Us @ 910-405-8311

info@cavinessandcates.com



**Priced**

**\$448,900**

2,560 Sq Ft

2.0 Story

4 Beds

3.5 Baths

2 Car Garage

Primary Bedroom: Down

## About 2829 Palamino Way

- 1.29-acre cul-de-sac lot!
- Primary suite on the first floor with tray ceiling and crown molding; Primary bath with dual sink vanity with center drawer stack and white shaker cabinets, quartz countertop in "Simply White", garden tub and separate shower with tile surround, private water closet, tile flooring, and walk-in closet.
- Great room with gas log fireplace with decorative mantle and granite surround in "Absolute Black"; Access to rear covered porch.

...Read More Online

## About The Community.

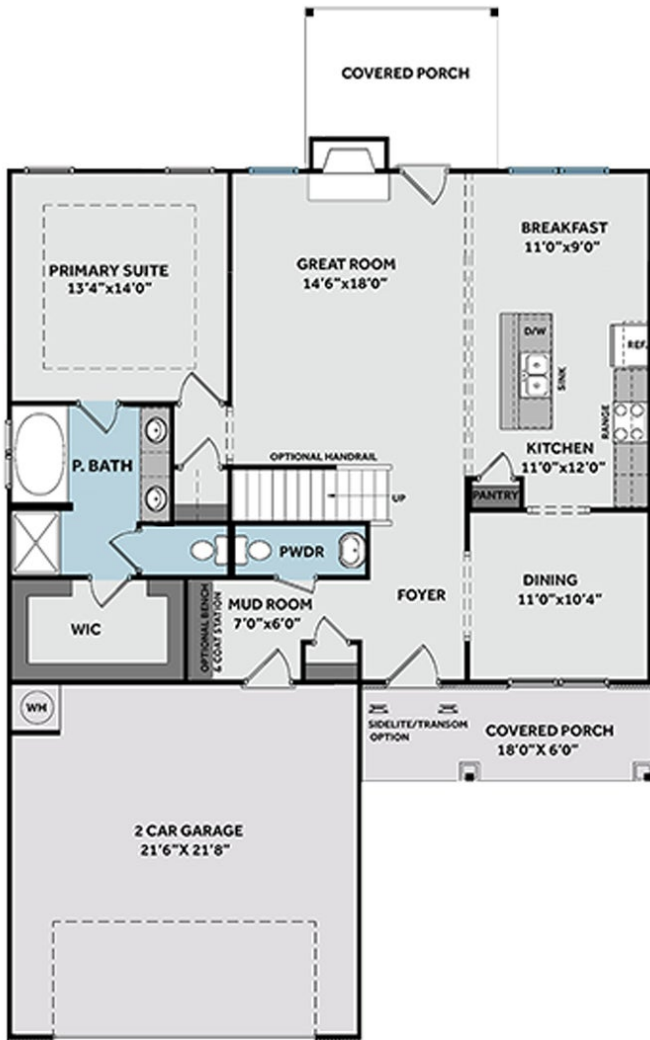
Beddard Ranch is a cozy, 41-home community in Grimesland, NC. Enjoy spacious homesites averaging half an acre and more! Your new home in Beddard Ranch feels tucked away but is just 15 minutes from the shopping, dining, and entertainment of Uptown Greenville. All homes feature the Caviness & Cates in-house 1-2-10 year warranty. Choose from one of our pre-designed homes under construction, or start from the ground up by choosing your favorite homesite, plan, and design options from the beginning! See each home listing for builder incentives and contact our New Home Specialists for details!

...Read More Online

Prices, plans, dimensions, features, specifications, materials, and availability of homes or communities are subject to change without notice or obligation. Illustrations are artists depictions only and may differ from completed improvements. All prices subject to change without notice. Please contact your sales associate before writing an offer.



## FIRST FLOOR



## SECOND FLOOR

