



2826 Palamino Way  
Grimesland, NC 27837  
**BEDDARD RANCH - BLADEN**

CONTACT OUR NEW HOME SPECIALISTS  
**MAGGIE & JESSICA**  
Call Us @ 910-405-8311  
info@cavinessandcates.com



## Priced

# \$524,900

Similar Home

3,142 Sq Ft

1.5 Story

5 Beds

3.0 Baths

3 Car Garage

Primary Bedroom: Down

## About 2826 Palamino Way

- Formal dining room painted in Sherwin Williams "Gale Force" with two-piece crown molding and picture frame wainscoting detail.
- Formal flex room located off of the foyer.
- Great room with corner gas log fireplace with floating mantle stained in "Grey Chestnut".
- Kitchen open to great room with breakfast area and island, quartz countertops in "Arctic White", subway tile backsplash in "Desert Gray" set in a herringbone pattern, white shaker cabinets; Stainless steel microwave, dishwasher, and gas range.

...Read More Online

## About The Community.

Beddard Ranch is a cozy, 41-home community in Grimesland, NC. Enjoy spacious homesites averaging half an acre and more! Your new home in Beddard Ranch feels tucked away but is just 15 minutes from the shopping, dining, and entertainment of Uptown Greenville. All homes feature the Caviness & Cates in-house 1-2-10 year warranty. Choose from one of our pre-designed homes under construction, or start from the ground up by choosing your favorite homesite, plan, and design options from the beginning! See each home listing for builder incentives and contact our New Home Specialists for details!

...Read More Online

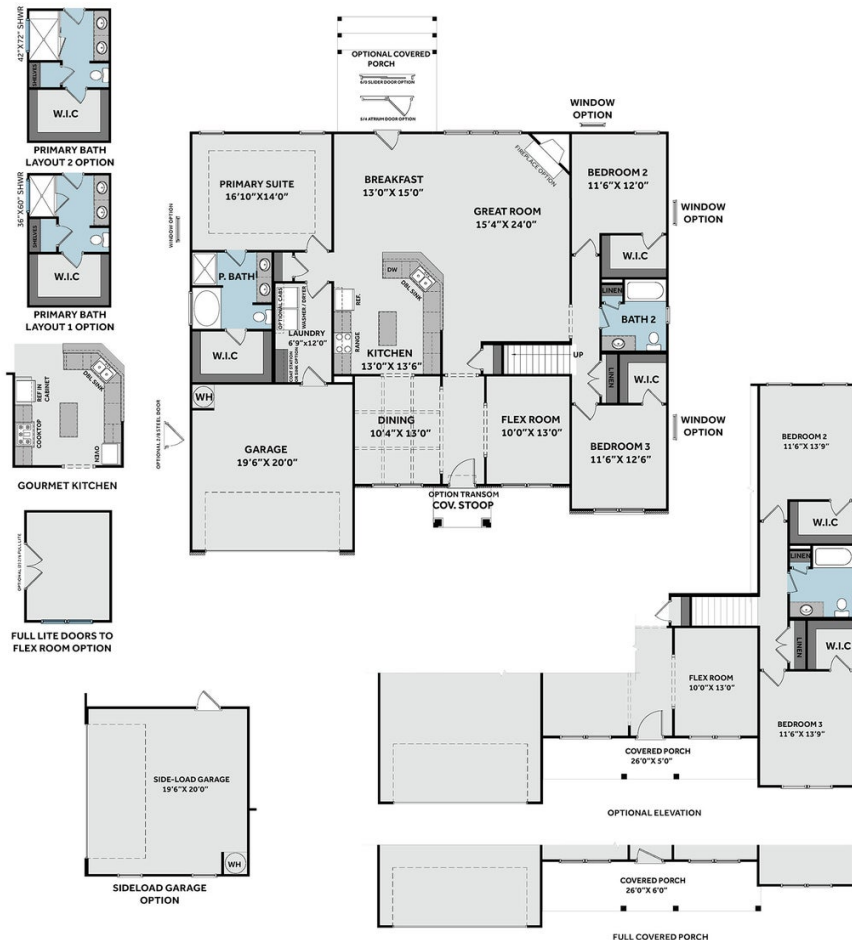
Prices, plans, dimensions, features, specifications, materials, and availability of homes or communities are subject to change without notice or obligation. Illustrations are artists depictions only and may differ from completed improvements. All prices subject to change without notice. Please contact your sales associate before writing an offer.



# THE BLADEN

CC3107

## FIRST FLOOR



## SECOND FLOOR

