



5533 Tall Timbers Drive
Fayetteville, NC 28311
ELLIOT FARMS - MEADOWBROOK

CONTACT OUR NEW HOME SPECIALISTS
MAGGIE & JESSICA
Call Us @ 910-405-8311
info@cavinessandcates.com



Priced
\$369,900

Elevation C
1,997 Sq Ft
2.0 Story
3 Beds
2.5 Baths
3 Car Garage
Primary Bedroom: Up

About 5533 Tall Timbers Drive

***\$15,000 Builder Credit: \$5,000 for design upgrades PLUS \$10,000 for closing costs and/or rate buydown when using builder's preferred lender. Conditions apply. See builder representative for details and disclosures.**

- The spacious great room seamlessly connects to the kitchen that features bar seating, "Luna Pearl" granite countertops, white shaker cabinets, an "Arctic White" brick-pattern subway tile backsplash,



...Read More Online

About The Community.

Elliot Farms is a peaceful community conveniently located near multiple metro areas! Situated on the Northside of Fayetteville, Elliot Farms is less than 15 minutes from Fort Liberty gates. Enjoy nearby local attractions like ZipQuest Waterfall & Treetop Adventures and Peaden's Seafood Restaurant. Downtown Fayetteville is just a 20 minutes drive and offers local shopping, restaurants, and attractions like the Fayetteville Woodpeckers Baseball at Segra Stadium, the Special Operations Museum, and the Cape Fear Botanical Garden. Drive North and you can visit downtown Lillington, Raven Rock State Park, and Campbell University in around 25 minutes. This community is just over an hour from the city of Raleigh and the RDU International airport.

...Read More Online

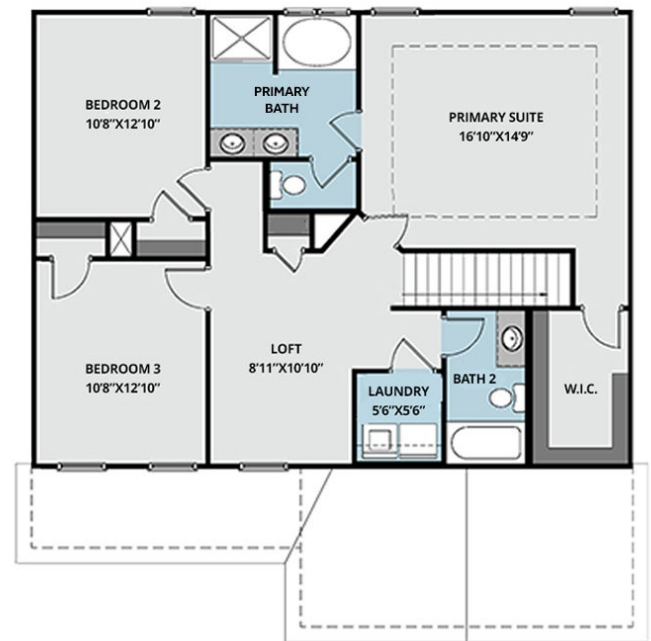
Prices, plans, dimensions, features, specifications, materials, and availability of homes or communities are subject to change without notice or obligation. Illustrations are artists depictions only and may differ from completed improvements. All prices subject to change without notice. Please contact your sales associate before writing an offer.



FIRST FLOOR



SECOND FLOOR



Prices, plans, dimensions, features, specifications, materials, and availability of homes or communities are subject to change without notice or obligation. Illustrations are artists depictions only and may differ from completed improvements. All prices subject to change without notice. Please contact your sales associate before writing an offer.