



359 Lyman Drive
Fayetteville, NC 28312
BLAKEFIELD - CAMBRIDGE

CONTACT OUR NEW HOME SPECIALISTS
MAGGIE & JESSICA
Call Us @ 910-405-8311
info@cavinessandcates.com



Priced

\$389,970

2,432 Sq Ft

1.5 Story

4 Beds

3.0 Baths

2 Car Garage

Primary Bedroom: Down

About 359 Lyman Drive

- Great room with gas log fireplace with decorative mantle and granite surround in "Absolute Back".
- Open kitchen with island with sink overlooking the great room, granite countertops in "New Caledonia", subway tile backsplash in "Arctic White" set in a herringbone pattern, white shaker cabinets, and pantry; Stainless steel microwave, dishwasher, and smooth top range.
- Dining room with views to the backyard and access to spacious rear covered porch and grill patio.
- Primary suite on first floor with tray ceiling and crown molding and walk-in closet; Primary bath with dual sinks with quartz countertop in "Simply White", white shaker cabinets with center drawer stack,

...Read More Online

About The Community.

Blakefield is a quiet, family-friendly community located near Eastover and Fayetteville. The community features large sites in a rural setting, but is convenient to shopping, dining and entertainment including Baywood Golf & Country Club, Cape Fear Botanical Garden, natural parks and more. Blakefield is just minutes from downtown Fayetteville, less than 20 miles from Ft. Liberty and only yards from area schools, making it the perfect place for growing families.

Built by Cates Building, Inc.

...Read More Online

Prices, plans, dimensions, features, specifications, materials, and availability of homes or communities are subject to change without notice or obligation. Illustrations are artists depictions only and may differ from completed improvements. All prices subject to change without notice. Please contact your sales associate before writing an offer.





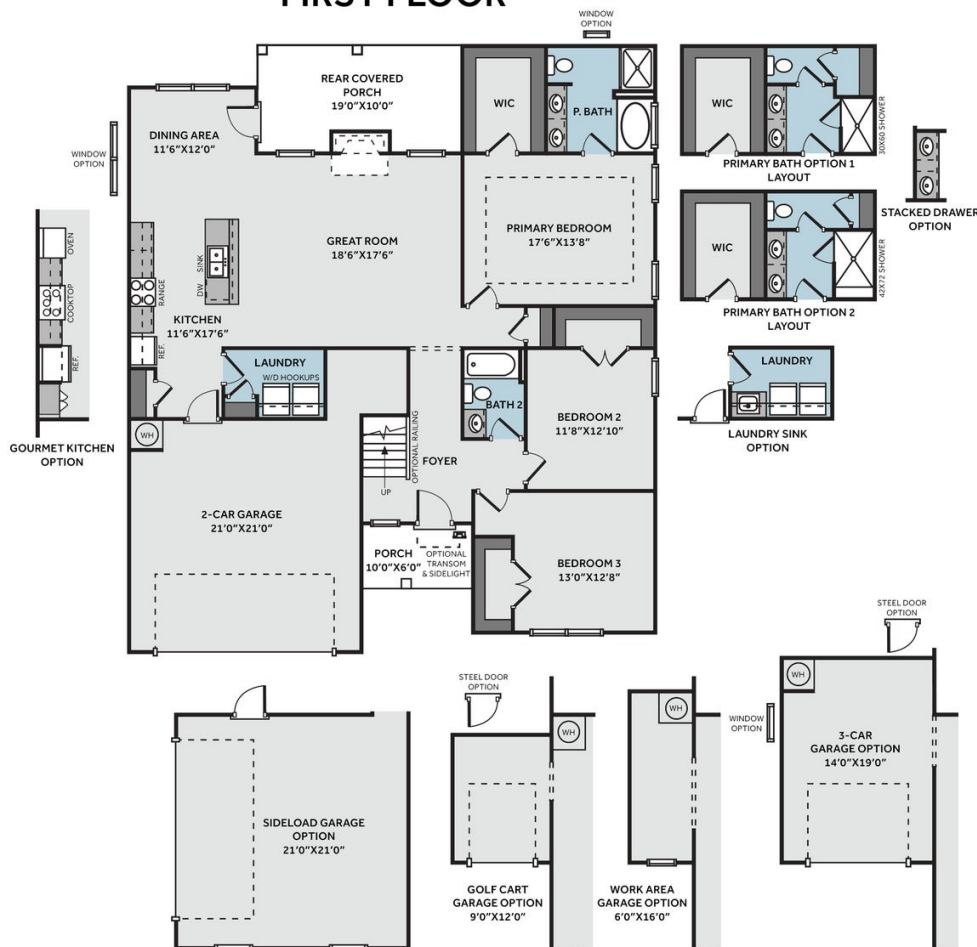
359 Lyman Drive
Fayetteville, NC 28312
BLAKEFIELD - CAMBRIDGE

CONTACT OUR NEW HOME SPECIALISTS
MAGGIE & JESSICA
Call Us @ 910-405-8311
info@cavinessandcates.com

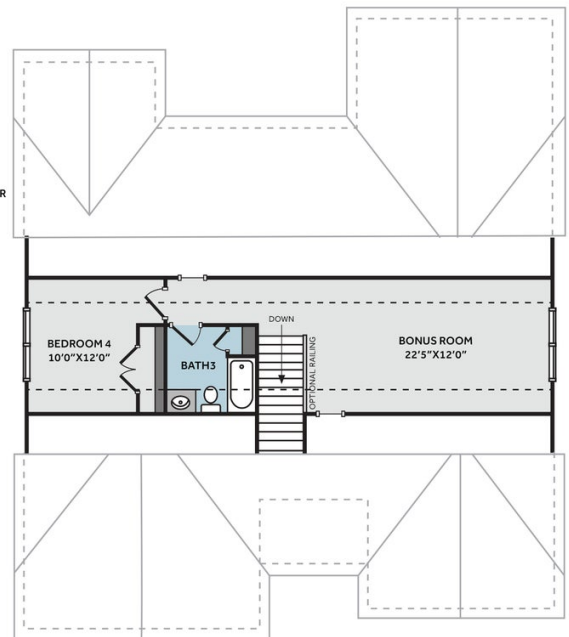
THE CAMBRIDGE

CC1850

FIRST FLOOR



SECOND FLOOR



Prices, plans, dimensions, features, specifications, materials, and availability of homes or communities are subject to change without notice or obligation. Illustrations are artists depictions only and may differ from completed improvements. All prices subject to change without notice. Please contact your sales associate before writing an offer.

