



2,308 Sq. Ft.

2 Stories

4 Bed

2.5 Bath

Primary Bed: Down

About Fontana

Named after the beautiful Fontana lake in Western North Carolina, this home plan includes 4 bedrooms with walk-in closets, a first-floor primary suite and a spacious loft and sitting area on the second floor.

- Kitchen with island and pantry cabinet; Gourmet kitchen appliance layout option
- Great room with optional gas log fireplace and access to optional covered porch or patio.
- First-floor primary suite with optional tray ceiling, dual sinks, private water closet, walk-in closet, optional center drawer stack in vanity, optional door from Primary suite to porch, and 3 tub/shower layout options

...Read More Online

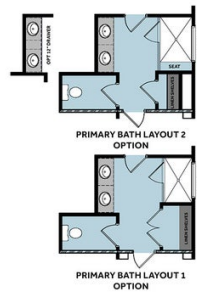
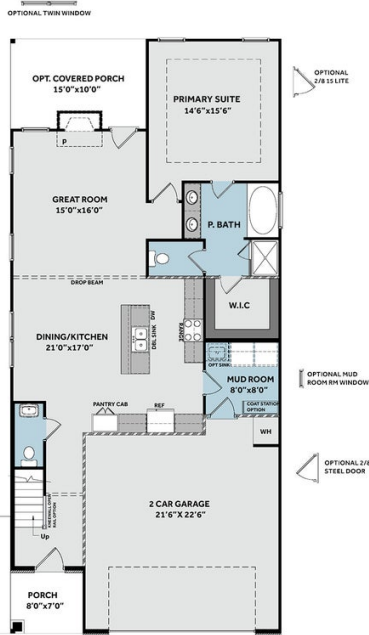


Elevation K

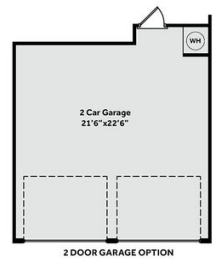
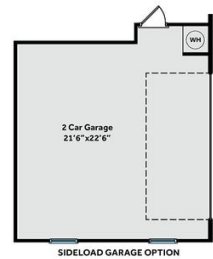
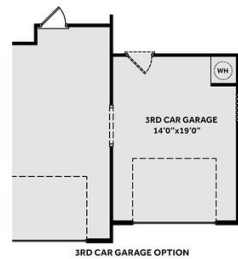
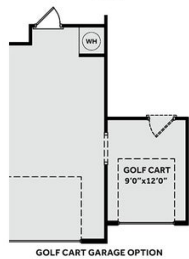
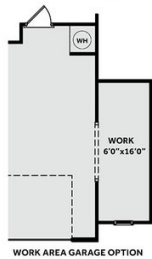
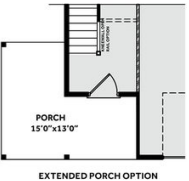
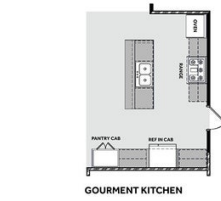
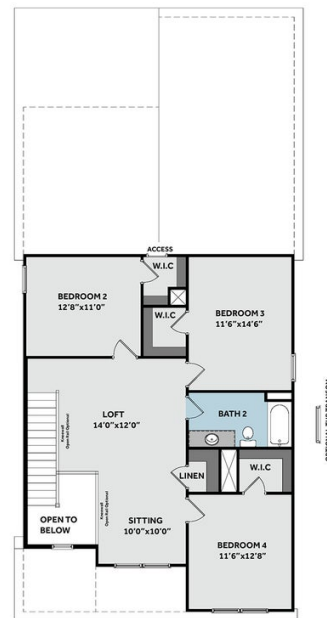
THE FONTANA

CC2308

FIRST FLOOR



SECOND FLOOR



Prices, plans, dimensions, features, specifications, materials, and availability of homes or communities are subject to change without notice or obligation. Illustrations are artists depictions only and may differ from completed improvements. All prices subject to change without notice. Please contact your sales associate before writing an offer.

