



3,156 Sq. Ft.

2 Stories

5 Bed

3.0 Bath

Primary Bed: Up

## About Roanoke

This home features an upstairs AND downstairs front porch!

- Formal dining room with coffered ceiling and wainscoting detail option
- Butler pantry or desk option and walk-in pantry
- Kitchen with optional bar seating - gourmet kitchen option with double wall ovens and cooktop
- Open great room with fireplace option and built-in bookshelf option
- Breakfast area with access to covered porch or patio options.
- Guest room or flex room on first floor

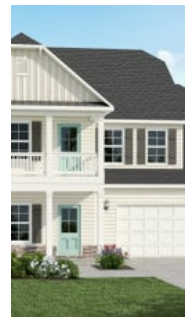
...Read More Online



Elevation B



Elevation B - Legacy Lakes (Picture Frame Windows in Lieu of Shutters)

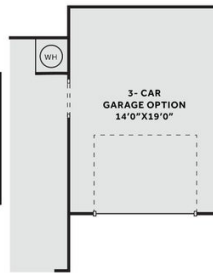
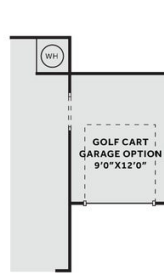
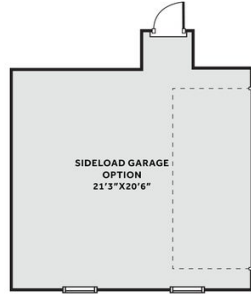
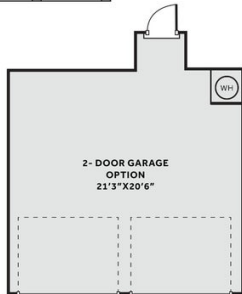
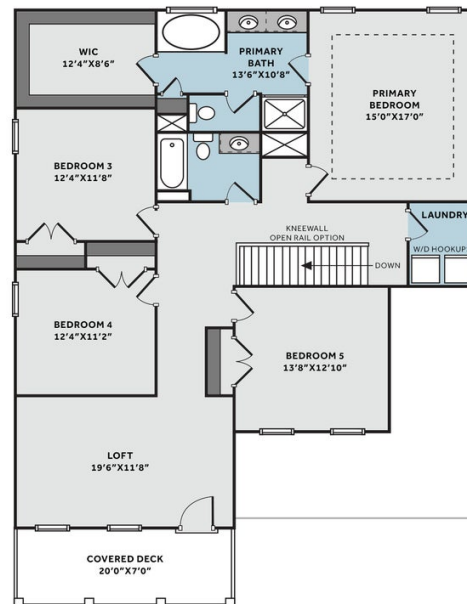
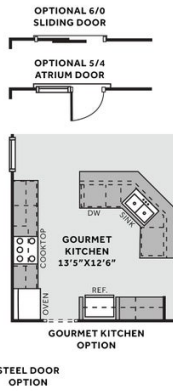
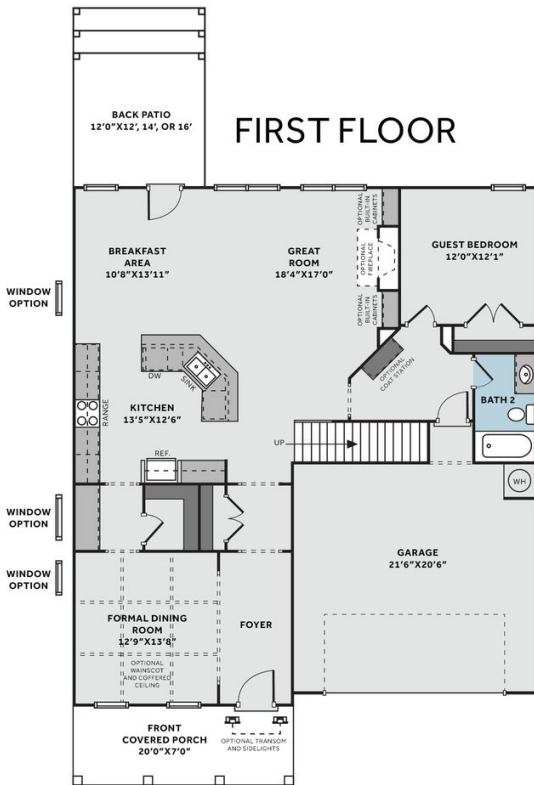


Elevation C

**THE ROANOKE**  
CC3156

**FIRST FLOOR**

**SECOND FLOOR**



Prices, plans, dimensions, features, specifications, materials, and availability of homes or communities are subject to change without notice or obligation. Illustrations are artists depictions only and may differ from completed improvements. All prices subject to change without notice. Please contact your sales associate before writing an offer.

