



713 Chestoa Trail
Aberdeen, NC 28315
BETHESDA PINES - BAILEY

CONTACT OUR NEW HOME SPECIALISTS
MAGGIE & JESSICA
Call Us @ 910-405-8311
info@cavinessandcates.com



Priced
\$443,900

Elevation FH
2,424 Sq Ft
2.5 Story
4 Beds
2.5 Baths
2 Car Garage
Primary Bedroom: Up

About 713 Chestoa Trail

- Great room with gas log fireplace with decorative mantle and granite surround in "Absolute Black".
- Kitchen features island, quartz countertops in "Carrera Retro", subway tile backsplash in "Arctic White" set in a brick pattern, white shaker cabinets, pantry, and dining area; Stainless steel microwave, dishwasher, and gas range.
- Rear covered porch is perfect for entertaining and is easily accessible through the dining area.
- Half bath with pedestal sink and oval mirror.
- Staircase with painted wood balusters.

...Read More Online

About The Community.

Bethesda Pines brings you a new place to call home in the heart of "the Pines" in Aberdeen, NC. Enjoy strolling along the neighborhood's walking trails, and if you have kids, they will be sure to have a blast at the tot lot! Located within walking distance to the popular Malcolm Blue Farm, home of local festivals and gatherings, and a short drive to downtown Aberdeen boasting charming locally owned shops and restaurants, you'll find everything you need conveniently close by!

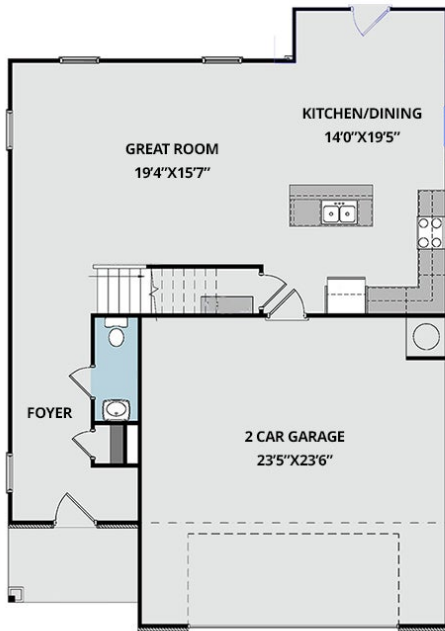
For military families, Bethesda Pines is just over 30 minutes from the Longstreet ACP at Fort Liberty.

...Read More Online

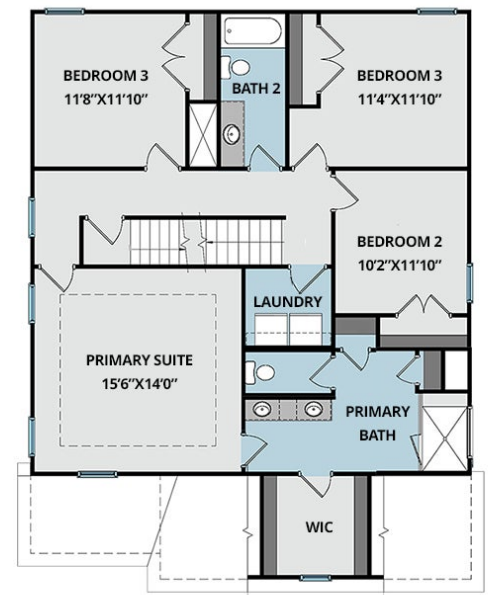
Prices, plans, dimensions, features, specifications, materials, and availability of homes or communities are subject to change without notice or obligation. Illustrations are artists depictions only and may differ from completed improvements. All prices subject to change without notice. Please contact your sales associate before writing an offer.



FIRST FLOOR



SECOND FLOOR



THIRD FLOOR

