



706 Chestoa Trail  
Aberdeen, NC 28315  
**BETHESDA PINES - CAMELLIA**

CONTACT OUR NEW HOME SPECIALISTS  
**MAGGIE & JESSICA**  
Call Us @ 910-405-8311  
info@cavinessandcates.com



**Priced**  
**\$444,900**

Elevation F  
2,358 Sq Ft  
2.0 Story  
4 Beds  
2.5 Baths  
2 Car Garage  
Primary Bedroom: Down

## About 706 Chestoa Trail

- Upon entering the home, a formal dining room painted in Sherwin Williams "Rare Gray", sits just off the foyer and features a coffered ceiling, picture frame wainscoting detail, and access to the kitchen.
- The kitchen features generous countertop space with bar seating, a sink overlooking the great room, 'Arctic White' quartz countertops, white shaker cabinets, a brick-pattern subway tile backsplash in "Arctic White", a pantry, and stainless steel appliances, including a natural gas range, microwave, and dishwasher.

...Read More Online

## About The Community.

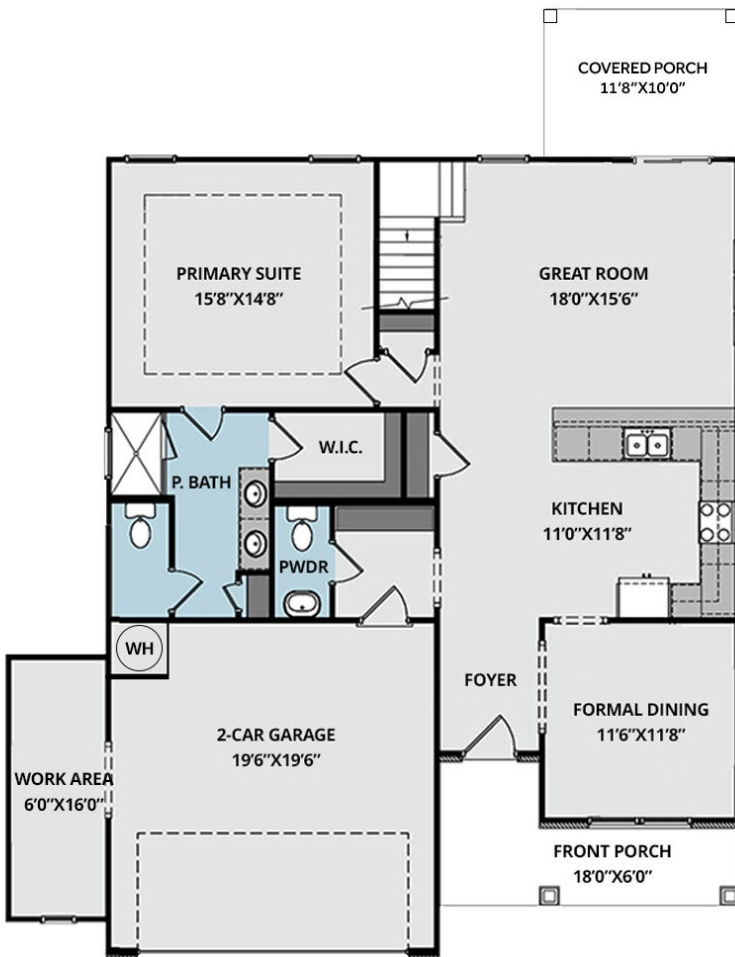
Bethesda Pines brings you a new place to call home in the heart of "the Pines" in Aberdeen, NC. Enjoy strolling along the neighborhood's sidewalks and walking trails, a new dog park for the pups, and if you have kids, they will be sure to have a blast at the tot lot! Located within walking distance to the popular Malcolm Blue Farm, home of local festivals and gatherings, and a short drive to downtown Aberdeen boasting charming locally owned shops and restaurants, you'll find everything you need conveniently close by!

...Read More Online

Prices, plans, dimensions, features, specifications, materials, and availability of homes or communities are subject to change without notice or obligation. Illustrations are artists depictions only and may differ from completed improvements. All prices subject to change without notice. Please contact your sales associate before writing an offer.



## FIRST FLOOR



## SECOND FLOOR

