



507 Grassy Gap Trail
Aberdeen, NC 28315
BETHESDA PINES - FONTANA

CONTACT OUR NEW HOME SPECIALISTS
MAGGIE & JESSICA
Call Us @ 910-405-8311
info@cavinessandcates.com



Priced

\$439,956

2,308 Sq Ft

2.0 Story

4 Beds

2.5 Baths

2 Car Garage

Primary Bedroom: Down

About 507 Grassy Gap Trail

***\$15,000 builder incentive available on select inventory homes with contracts submitted on or before 12/31/24 with 30-day closing. Please see builder representative for details.**

- Kitchen with island and bar seating, white shaker cabinets, quartz countertops in "Trigato", subway tile in "Arctic White" set in a brick pattern, pantry cabinet; Stainless steel microwave, dishwasher, and gas range.

...Read More Online

About The Community.

Bethesda Pines brings you a new place to call home in the heart of "the Pines" in Aberdeen, NC. Enjoy strolling along the neighborhood's sidewalks and walking trails, a new dog park for the pups, and if you have kids, they will be sure to have a blast at the tot lot! Located within walking distance to the popular Malcolm Blue Farm, home of local festivals and gatherings, and a short drive to downtown Aberdeen boasting charming locally owned shops and restaurants, you'll find everything you need conveniently close by!

...Read More Online

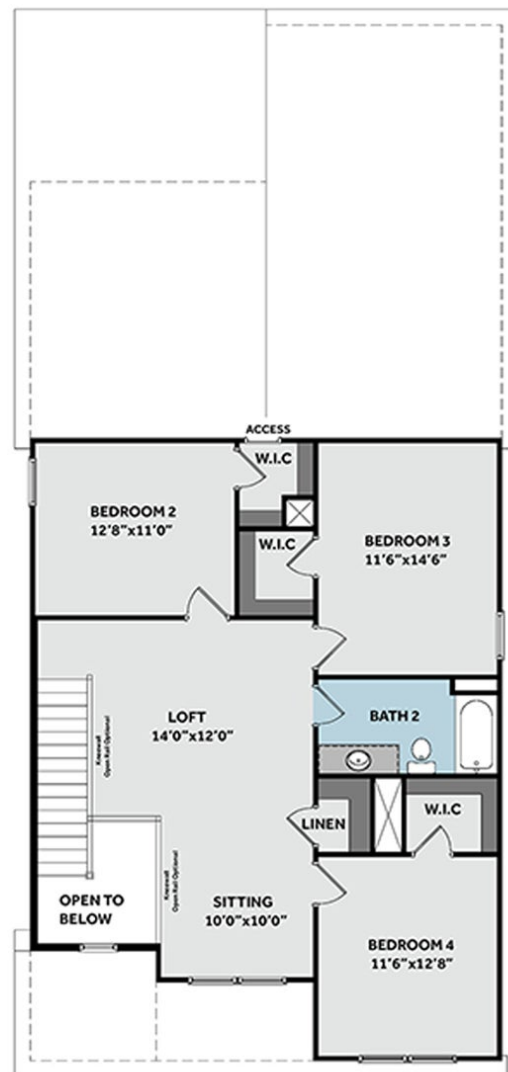
Prices, plans, dimensions, features, specifications, materials, and availability of homes or communities are subject to change without notice or obligation. Illustrations are artists depictions only and may differ from completed improvements. All prices subject to change without notice. Please contact your sales associate before writing an offer.



FIRST FLOOR



SECOND FLOOR



Prices, plans, dimensions, features, specifications, materials, and availability of homes or communities are subject to change without notice or obligation. Illustrations are artists depictions only and may differ from completed improvements. All prices subject to change without notice. Please contact your sales associate before writing an offer.

