



362 Glassmine Trail  
 Aberdeen, NC 28315  
**BETHESDA PINES - AUSTIN**

CONTACT OUR NEW HOME SPECIALISTS  
**MAGGIE & JESSICA**  
 Call Us @ 910-405-8311  
 info@cavinessandcates.com



**Priced**  
**\$452,900**

Elevation F  
 2,574 Sq Ft  
 2.0 Story  
 4 Beds  
 2.5 Baths  
 2 Car Garage  
 Primary Bedroom: Up

## About 362 Glassmine Trail

**\*\$15,000 Builder Credit: \$5,000 for design upgrades PLUS \$10,000 for closing costs and/or rate buydown when using the builder's preferred lender. Conditions apply. See builder representative for details and disclosures.**

- The first-floor home office features French doors, a closet, and direct access to the hallway bathroom, which includes a pedestal sink and an oval mirror. This bathroom is accessible from both

...Read More Online

## About The Community.

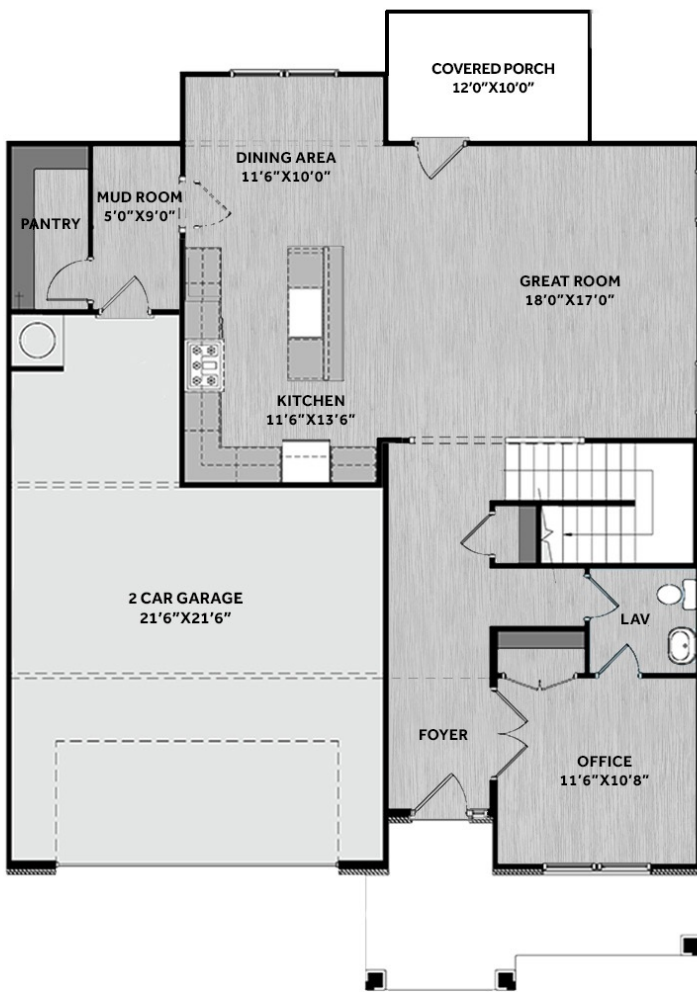
Bethesda Pines brings you a new place to call home in the heart of "the Pines" in Aberdeen, NC. Enjoy strolling along the neighborhood's sidewalks and walking trails, a new dog park for the pups, and if you have kids, they will be sure to have a blast at the tot lot! Located within walking distance to the popular Malcolm Blue Farm, home of local festivals and gatherings, and a short drive to downtown Aberdeen boasting charming locally owned shops and restaurants, you'll find everything you need conveniently close by!

...Read More Online

Prices, plans, dimensions, features, specifications, materials, and availability of homes or communities are subject to change without notice or obligation. Illustrations are artists depictions only and may differ from completed improvements. All prices subject to change without notice. Please contact your sales associate before writing an offer.



## FIRST FLOOR



## SECOND FLOOR

