



2852 Tucker Hill Drive
Grimesland, NC 27837
TUCKER HILL FARM - ARBOR

CONTACT OUR NEW HOME SPECIALISTS
MAGGIE & JESSICA
Call Us @ 910-405-8311
info@cavinessandcates.com



Priced

\$427,950

2,554 Sq Ft

1.5 Story

4 Beds

3.0 Baths

2 Car Garage

Primary Bedroom: Down

About 2852 Tucker Hill Drive

*\$5,000 Builder Incentive - to be used towards rate buydown, closing costs, or design studio upgrades! Conditions apply. Please see builder representative for details.

- Kitchen features island with sink overlooking great room, quartz countertops in "Elegance", natural stone mosaic backsplash, white shaker cabinets, pantry, and dining area with views to the backyard; Stainless steel microwave, dishwasher, and gas range.

...Read More Online

About The Community.

Find your place to call home in the new and private community of Tucker Hill Farm! Located just off of Tucker Road, Tucker Hill Farm is just 15 minutes from the shopping, dining, and entertainment of Uptown Greenville. With just 55 homes and homesites ranging up to over an acre, you can get the rural, quiet feel close to all of the local entertainment of the city. New homes feature our specially designed home plans, the quality construction you have come to expect, and the signature Caviness & Cates in-house 1-2-10 year home warranty.

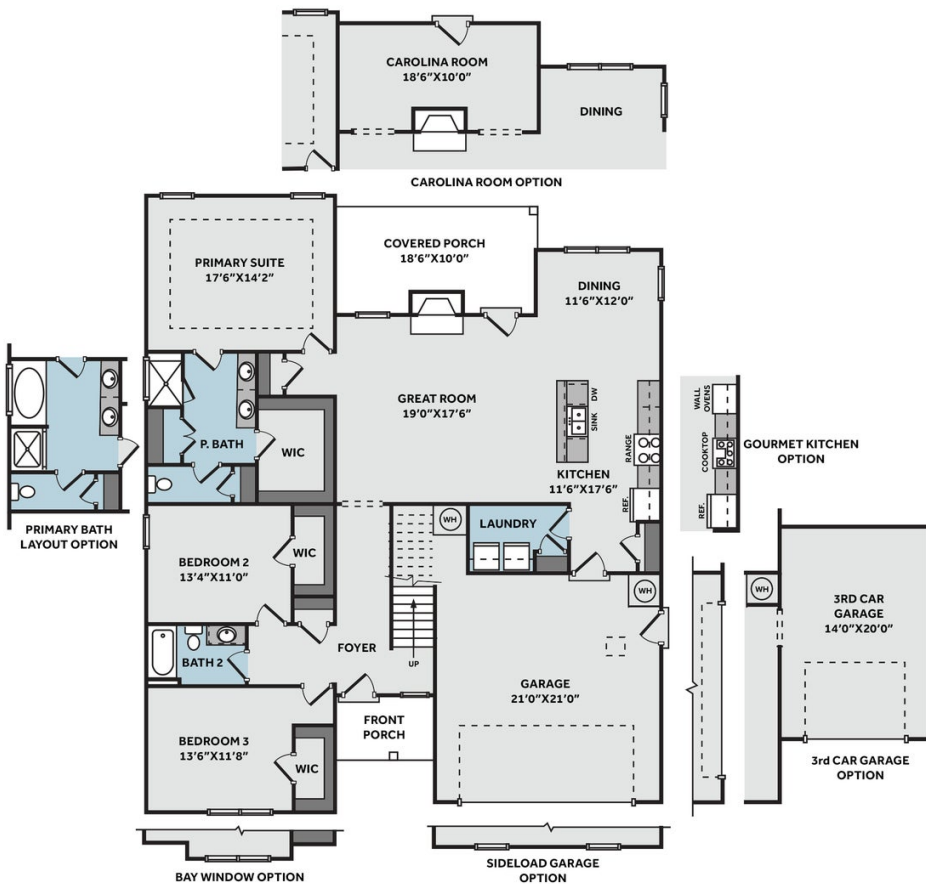
...Read More Online

Prices, plans, dimensions, features, specifications, materials, and availability of homes or communities are subject to change without notice or obligation. Illustrations are artists depictions only and may differ from completed improvements. All prices subject to change without notice. Please contact your sales associate before writing an offer.



THE ARBOR CC2544

FIRST FLOOR



SECOND FLOOR

